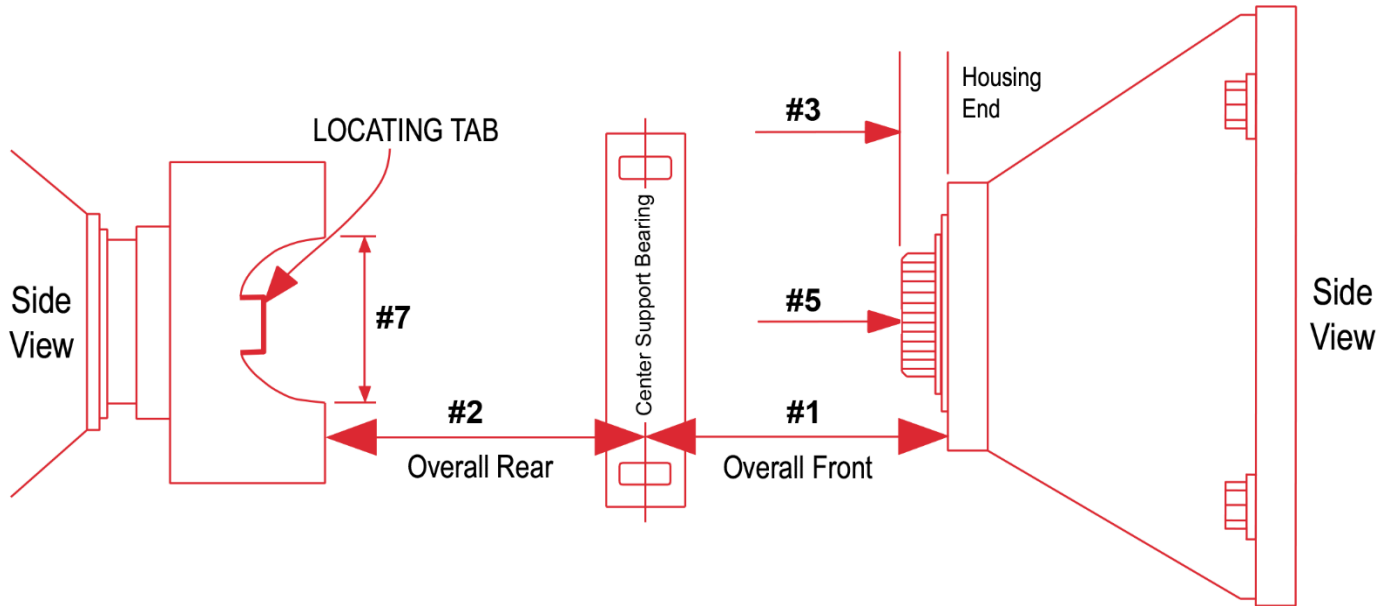


MEASURE DIAGRAM 6

This diagram is to illustrate how to measure for a 2-piece driveshaft with a slip yoke at the transmission and a u-joint at the differential.

NOTE: Vehicle should be measured under normal load with the wheels on the ground and axles under normal load or rear end supported on the safety jack stands. Driveshafts should never be measured with the rear suspension hanging.



- #1 What is the overall measurement from the end of the transfer case to the center of the support bearing? _____ INCHES
- #2 What is the overall measurement from the center of the support bearing mount to the flat surface of the pinion yoke or center of rear u-joint? _____ INCHES
- #3 How far does your output shaft stick out past the end of the case? _____ INCHES
- #4 2WD – What is the model name or number of the transmission? _____
4WD – What is the model name or number of the transfer case? _____
- #5 How many splines are there on the output shaft? _____
- #6 How wide does the rear u-joint need to be to fit your pinion yoke?
6A - If your pinion yoke DOES NOT have locating tabs _____ INCHES
(see measure Diagram 10 for further assistance with “c” clip style yoke measurements)
6B - If your pinion yoke DOES HAVE locating tabs 3 ⁷/₃₂ or 3 ⁵/₈ INCHES
(see measure Diagram 9 for further assistance with locating tab style yoke measurements)
- #7 What is the diameter of the caps on the rear transfer case yoke? 1 ¹/₁₆ 1 ¹/₈ 1 ³/₁₆