

Measure Diagram D-10

2 PIECE DRIVESHAFT MEASUREMENT



Measure Driveshaft Components:

Note: Vehicle should be measured with wheels and axles under normal load with rear end supported on safety jack stands as if the vehicle was sitting normally on the roadway. The rear end should never be measured with the rear suspension hanging down out of normal position

Note: If you need help or are unsure, please call our professional staff to answer your questions.

ARIZONA DRIVESHAFT

480-898-1957

Mountain Standard Time (non daylight savings)

7:00 AM to 5:00 PM Mon - Fri

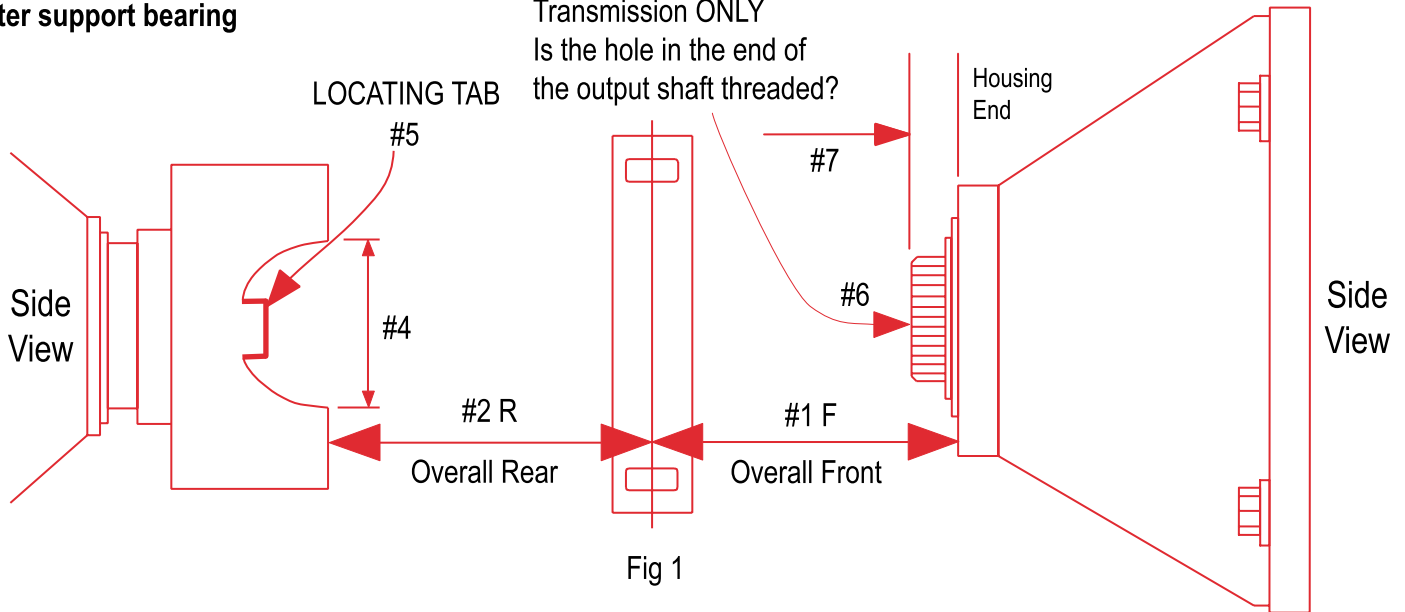
Closed Weekends and Holidays

**This diagram is to illustrate measurement for:
Van and Pick-Up 2 piece driveshafts with
a center support bearing**

Note: T-400 or 4L80

Transmission ONLY

Is the hole in the end of
the output shaft threaded?



- #1 What is the overall measurement from the end of the trans case to the center _____ Inches
of the support bearing mount as shown in Fig 1
- #2 What is the overall measurement from the center of the support bearing mount _____ Inches
to the flat surface on the pinion yoke as shown in drawing
- #3 How wide is the rear u-joint including caps outside to outside? _____ 3-7/32 3-5/8 Circle One
Option 1: Measuring the pinion yoke with locating tabs / between tabs measurement is _____ 3-7/32 3-5/8 Circle One
Option 2: Measuring pinion yoke without locating tabs / measurement across yoke is _____ Inches
Measure outside to outside of yoke
- #4 What is the u-joint cap diameter that fits into pinion yoke? _____ 1-1/16 1-1/8 1-3/16 Circle One
- #5 The pinion yoke has locating tabs _____ YES NO Circle One
The pinion yoke does not have locating tabs _____ YES NO Circle One
- #6 T400 or 4L80 trans output shaft is threaded _____ YES NO Circle One
T400 or 4L80 trans output shaft is not threaded _____ YES NO Circle One
Does not matter if it is not a T400 or 4L80
- #7 How far does the output shaft stick out past the end of the trans case _____ Inches